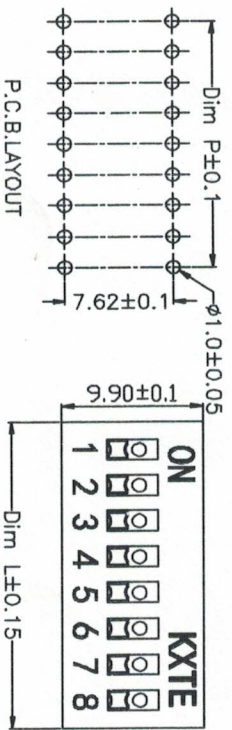
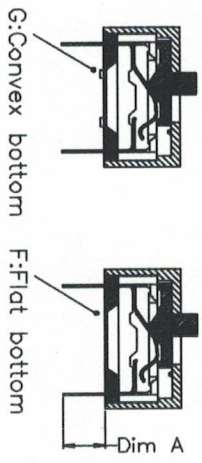
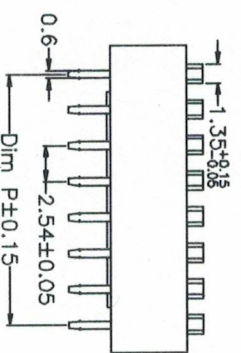
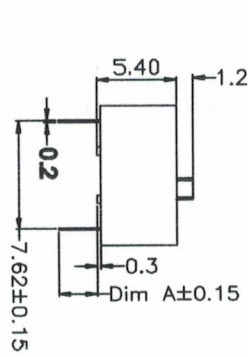


Poles	1P	2P	3P	4P	5P	6P	7P	8P	9P	10P	12P
	4.06	6.60	9.14	11.68	14.22	16.76	19.30	21.84	24.38	26.92	32.00



Dim A	S:Short pin	L:Long pin
G:Convex bottom	3.2mm	3.5mm
F:Flat bottom	3.5mm	3.8mm



Texture of material:
 1. Base: UL94V-0 PBT engineering plastic, black
 2. Top cover: UL94V-0 PBT engineering plastics, red, blue
 3. Push button: UL94V-0 PA66, white
 4. Terminal: phosphorus bronze gold plated.

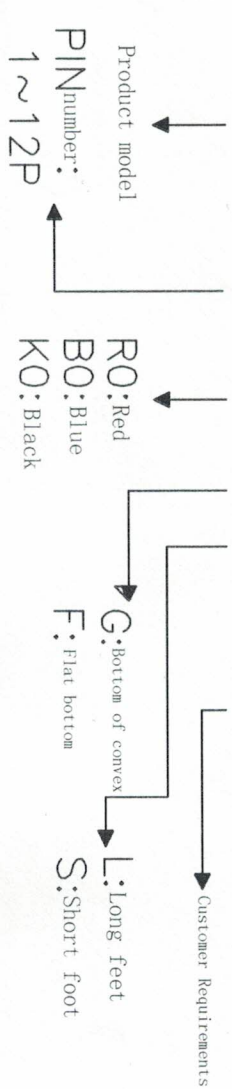
Mechanical properties:
 1. Operating power: 8N (maximum)
 2. Push button stroke: 2.00mm
 3. Use Temperature: -20°C~+70°C
 4. Storage temperature: -40°C~+85°C.

Electrical characteristics:
 1. Electrical life: Each switch is tested under voltage 24VDC and current 25mA, 2000 calls back and forth.
 2. Rated current with unusual switch: 100mA, voltage withstanding 50VDC.
 3. Rated current that switches frequently: 25mA, voltage 24VDC.
 4. Contact impedance: a maximum initial value of 50mΩ, B maximum value of 100m after testing.
 5. Insulation impedance: minimum 100MΩ, 500VDC.
 6. Pressure strength: 500VAC/1 minute.
 7. Polar capacitance: maximum 5pF.
 8. Loop: Single-junction single-selection

Welding and cleaning process:
 1. Make sure the switch is in off position during all operations.
 2. Peak soldering: The recommended solder temperature is 250±5°C for 3-5 seconds.
 3. Hand welding: Use 30 W iron to control the temperature at 320°C and the welding time is about 3 seconds.
 4. Cleaning process: Cleaning with ultrasound, can give better results, use steaming/in steam mode, the temperature should not exceed 51°C.

ORDER

DS -XXP-XX-X X-XXX-XX



Explain:
 1. General tolerance:
 more than 10mm - ±0.2mm,
 within 10mm - ±0.1mm.
 2. Material and performance refer
 to the attachment.

Dimension tolerance:	Angle tolerance:
X: ±0.5 X: ±0.3 .XX ±0.1	X: ±5° X: ±3° .XX ±1°
Drawing Type: AUTO CAD	Drawing judge: 1\1
Scale: 1:1	Drawing No:

Projection method	Product name
mm	DS
Paper size: A4	In line toggle switch

Date	Draw	Approve