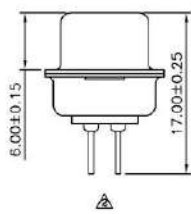
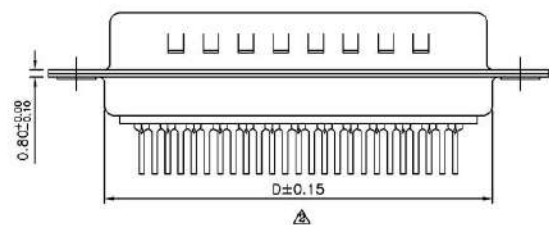
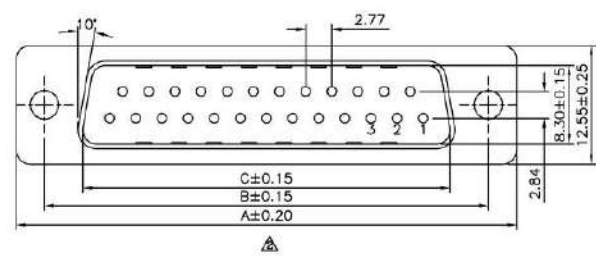


SPECIFICATION
 Current Rating: 2 Amps
 Withstanding Voltage: 1000V (One Minute)
 Insulation Resistance: 1000 Megohms Min. At 500V DC
 Operation Temperature: -50°C ~ +105°C
 Insulator: PBT+30%G.F. (UL94V-0)
 Contact: Brass, Gold Flash On Contact Area, Tin
 Plated On Solder Tail, Under Nickel
 Shell: Steel, Front Nickel Plated After Tin
 RoHS Compliant



Pos	A	B	C	D
9	30.80	25.00	16.92	19.20
15	39.20	33.30	25.25	27.70
25	53.05	47.04	38.96	41.10
37	69.40	63.50	55.42	57.30



CATEGORY		APPROVED BY		UNLESS OTHERWISE SPECIFIED TOLERANCES ARE .X ± 0.25 X* ± 3* .XX ± 0.15 XX* ± 1* .XXX ± 0.05 .XXX* ± 0.5*			
PART No. 70 03 XX		CHECKED BY			A2	Modify Data	08/06/2010
DRAWING No.		DRAWING BY		A1		12/18/2009	
SCALE	NONE	REV.	A2	UNIT	mm	NO. REV.	REVISIONS
							DATE