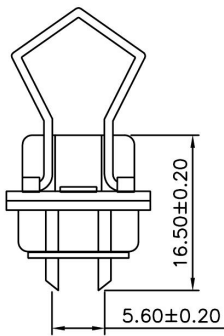
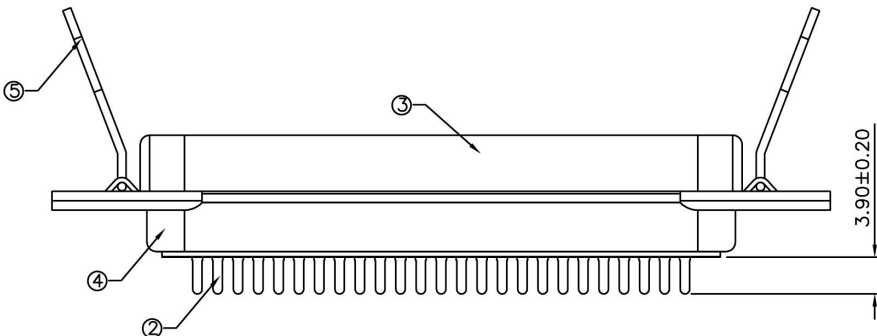
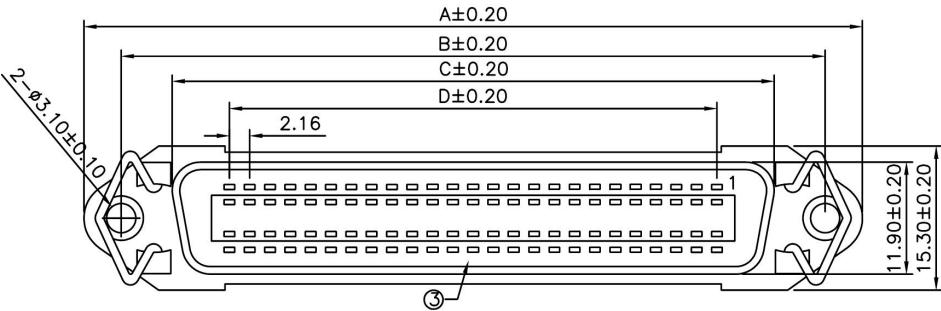


SPECIFICATION

Current Rating:1A Max.
 Dielectric Withstanding Voltage:500V AC For 1 Minute
 Insulation Resistance:1000 Megaohms Min. At 500V DC
 Contact Resistance:30 Milliohms Max.
 Temperature Range:-55°C~+105°C
 Insertion Force:7.0 kgf Max.
 Extraction Force:2.5 kgf Min.
 RoHS Compliant



| Pin | A | B | C | D |
|-----|-------|-------|-------|-------|
| 36 | 67.69 | 59.74 | 48.90 | 36.72 |
| 50 | 82.78 | 74.85 | 64.00 | 51.84 |

| | | | | |
|-----|-------------|----------|-------------------|---|
| 5 | Spring | 2 | Stainless Steel | ∅0.90 |
| 4 | Back-Shell | 1 | Cold Rolled Steel | Tin Plated Over Copper |
| 3 | Front-Shell | 1 | Cold Rolled Steel | Tin Plated Over Copper |
| 2 | Contact | 36 Or 50 | Brass | Contact Area: Gold Plated Solder Area: Tin Plated Under Plated Nickel |
| 1 | Housing | 1 | PBT | UL94V-0, Blue |
| No. | Name | Qty | Material | Remarks |

Spectra Connectronics Pvt. Ltd.
 HOUSE OF CONNECTORS™

| | | | |
|-----------------|------|-------------|----|
| CATEGORY | | APPROVED BY | |
| PART No. 7020XX | | CHECKED BY | |
| DRAWING No. | | DRAWING BY | |
| SCALE | NONE | REV. | BO |

UNLESS OTHERWISE SPECIFIED TOLERANCES ARE
 .X ±0.30
 .XX ±0.20
 .XXX ±0.10
 ANG. ±1°

| | | | | | | |
|------|----|----------|----|-------------|-----|------------|
| UNIT | mm | NO. REV. | BO | NEW RELEASE | CHK | DATE |
| | | | | | | 11/24/2009 |
| | | | | | | |
| | | | | | | |
| | | | | | | |