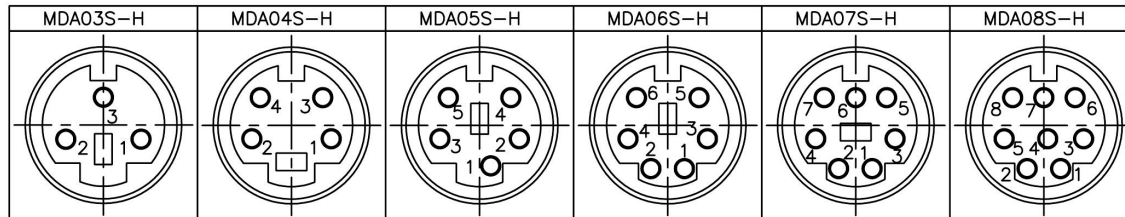
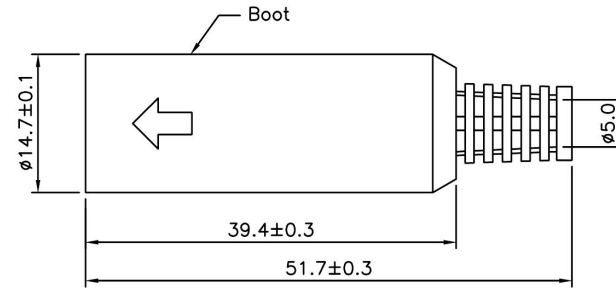
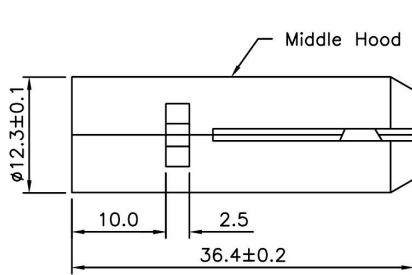


**△ SPECIFICATION**  
 Rating:100V AC 1A Max. Or 12V DC 2A Max.  
 Dielectric Strength:250V AC/1 Minute  
 Contact Resistance:30 Milliohms Max.  
 Insulation Resistance:50 Megaohms Min. At 250V DC  
 Operation Temperature:-20°C~+105°C  
 Insertion Force:4.5Kg Max.  
 Withdrawal Force:0.9Kg~3Kg.  
 Boot:PE+2L  
 Middle Hood:PA-757  
 Metal Shell:Copper,Nickel Plated  
 Insulator:PA6+G.F.  
 Pin Contact:Brass,Silver Plated  
 RoHS Compliant



**Spectra Connectronics Pvt. Ltd.**  
 HOUSE OF CONNECTORS™

CATEGORY		APPROVED BY		UNLESS OTHERWISE SPECIFIED TOLERANCES ARE					
PART No. 51 02 XX		CHECKED BY		△ .X ±0.1 .XX ±0.05					
DRAWING No.		DRAWING BY		△ A1		Modify Data	HZF	03/18/2010	
SCALE	NONE	REV.	A1	UNIT	mm	△ A0	NEW RELEASE	HZF	
				NO.REV.		REVISIONS		CHK	DATE